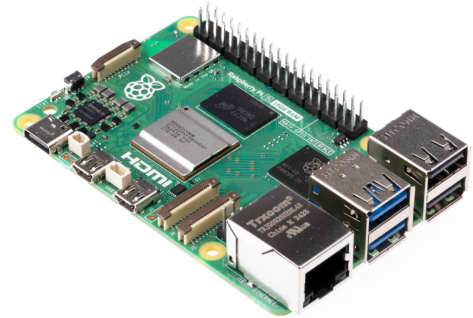
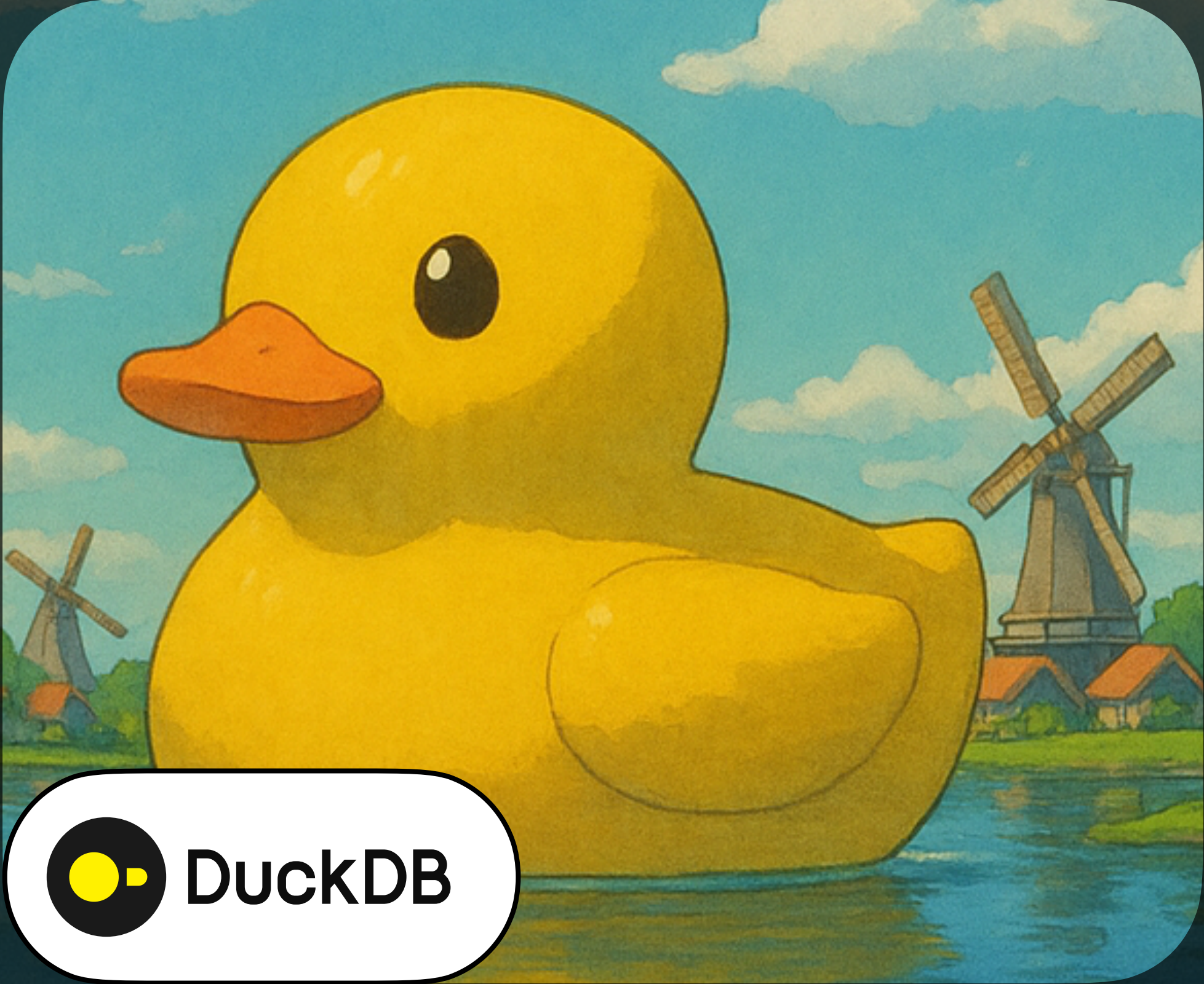


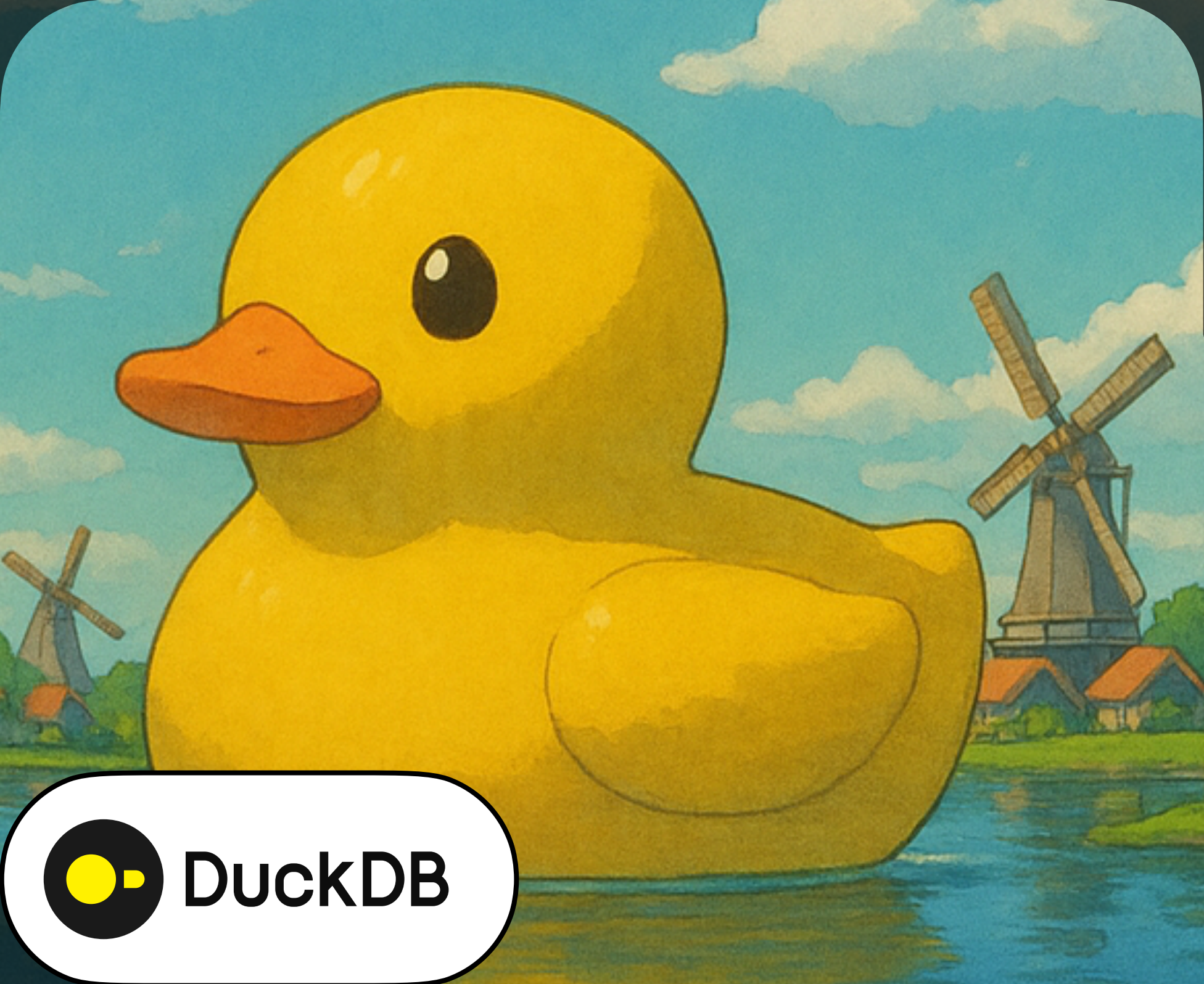
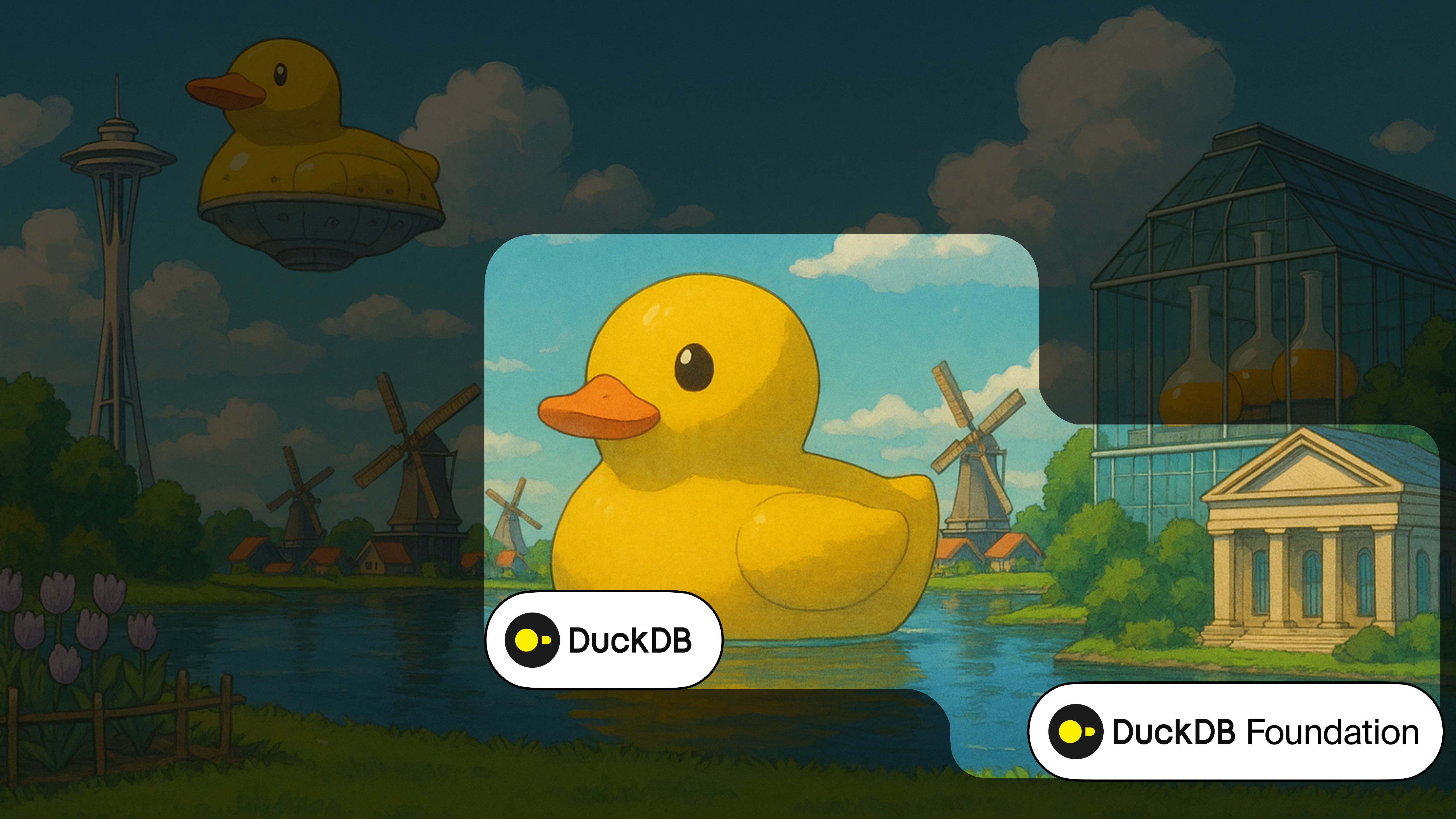


Highly portable open-source
SQL database for analytics







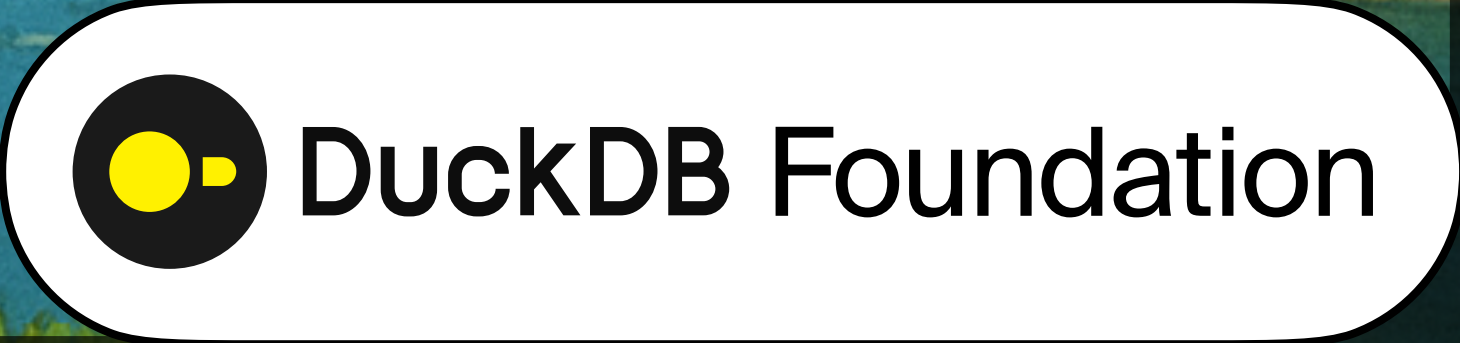
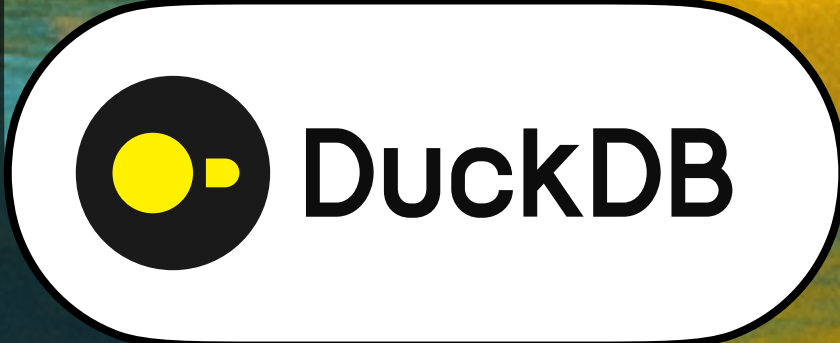
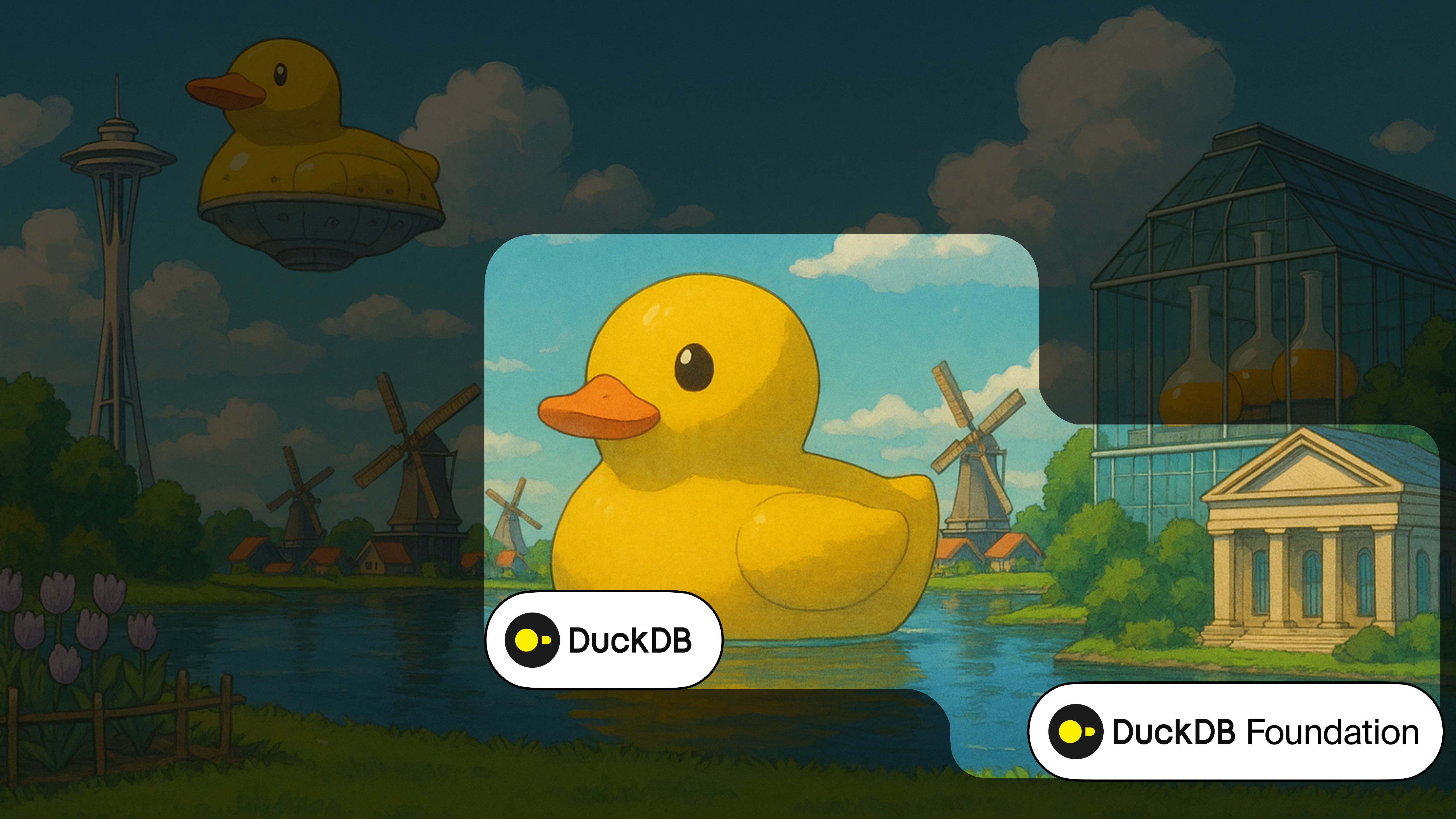


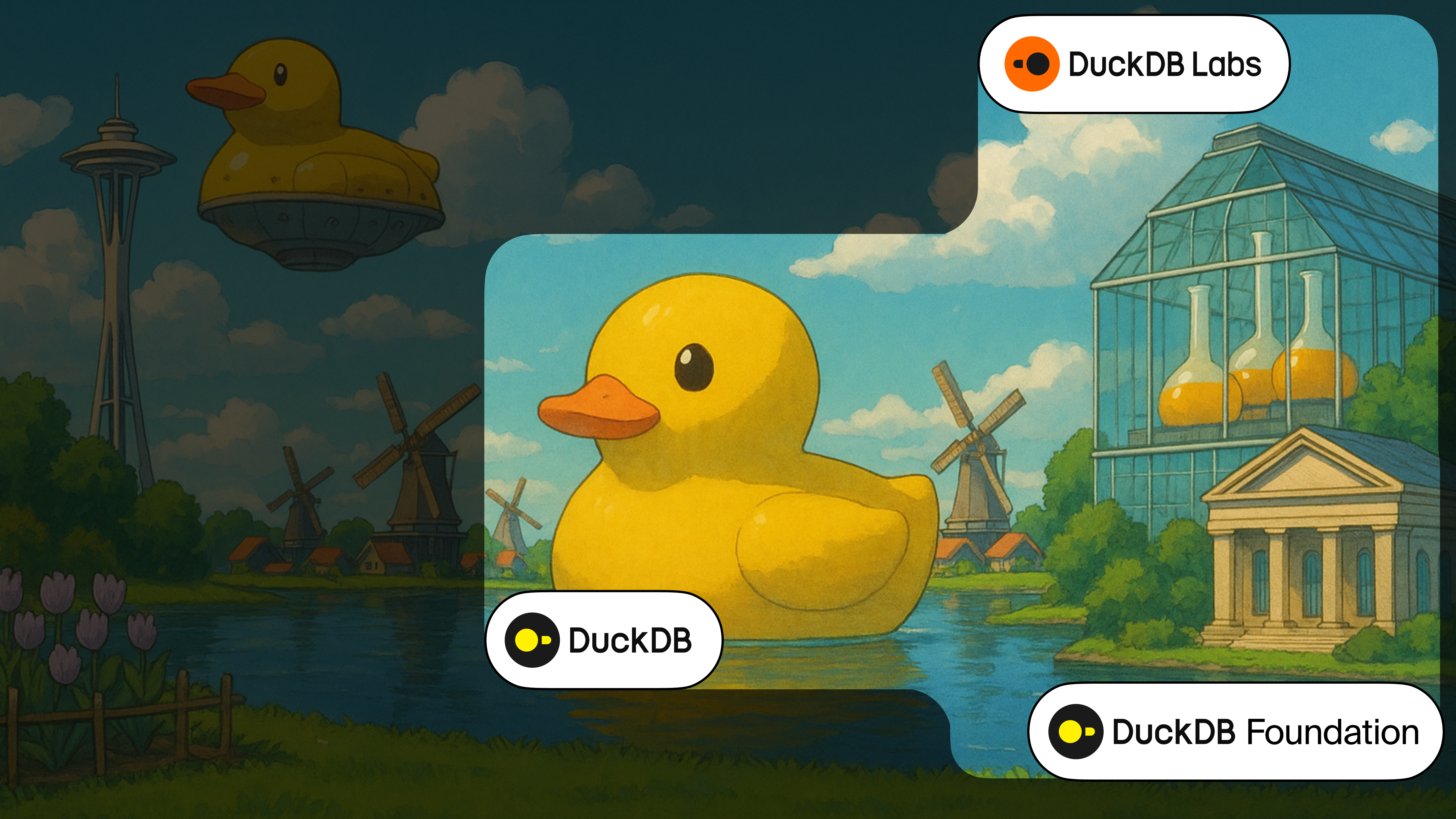


A non-profit organization
that holds the intellectual property of DuckDB

Gold Supporters







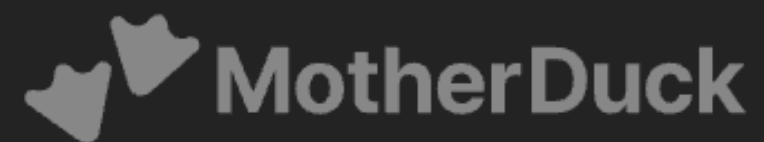
 DuckDB Labs

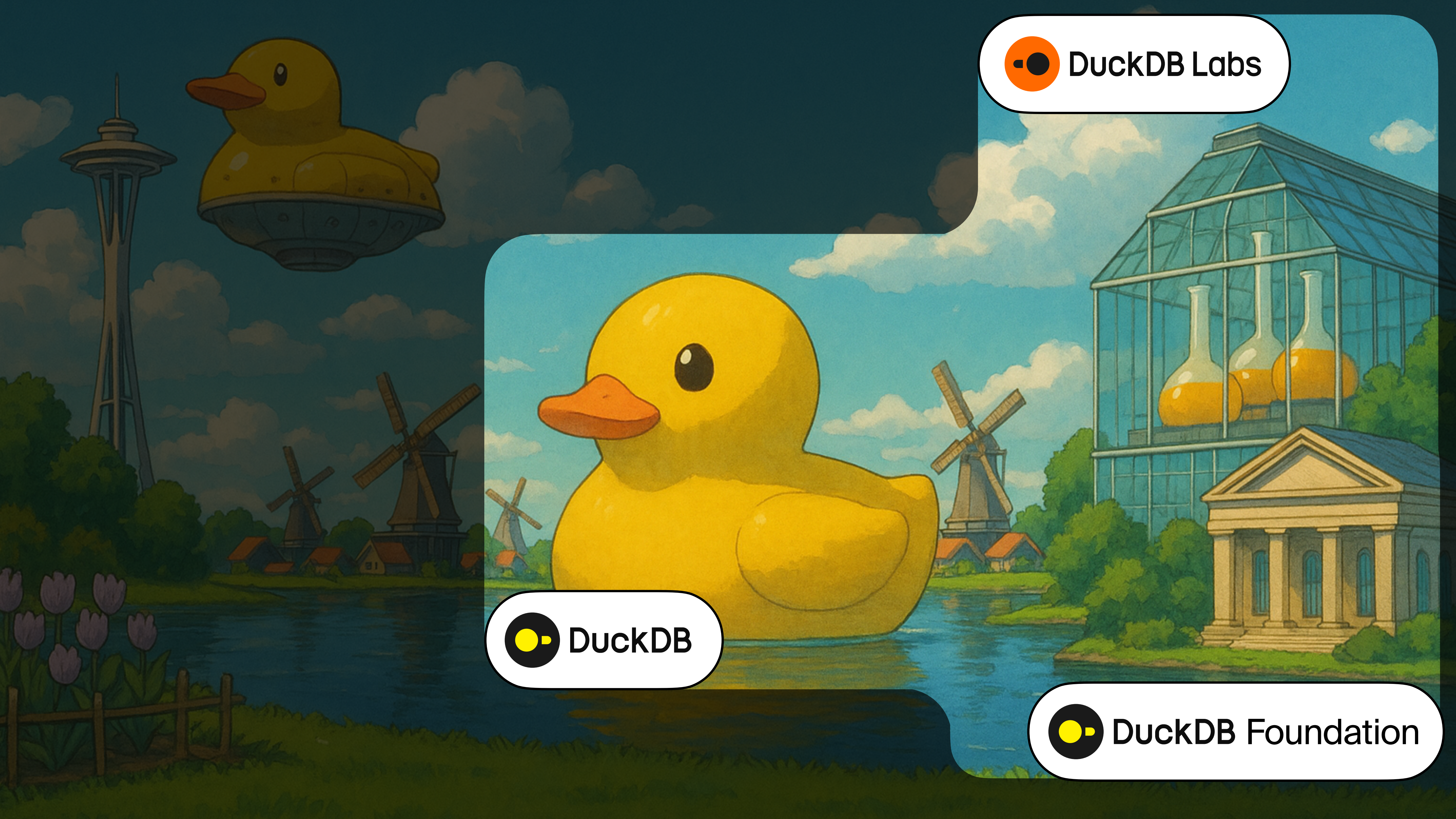
 DuckDB

 DuckDB Foundation



Employs the main contributors,
provides support & consultancy services









Cloud data warehouse built on DuckDB



CLOUD DATABASE
STORAGE



SIMPLIFIED DATABASE
SHARING









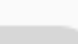
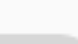
HYBRID QUERY
EXECUTION



STRONG DUCKDB
ECOSYSTEM





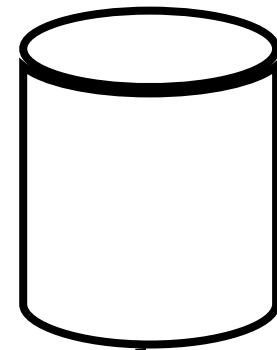
<u>duckpgq</u>	GitHub 	Extension that adds support for SQL/PGQ and graph algorithms
<u>evalexpr_rhai</u>	GitHub 	Evaluate the Rhai scripting language in DuckDB
<u>faiss</u>	GitHub 	Provides access to faiss indices from DuckDB.
<u>flockmtl</u>	GitHub 	LLM & RAG extension to combine analytics and semantic analysis
<u>fuzzycomplete</u>	GitHub 	Fuzzy matching based autocompletion
<u>geography</u>	GitHub 	Global spatial data processing on the sphere
<u>gsheets</u>	GitHub 	Read and write Google Sheets using SQL
<u>h3</u>	GitHub 	Hierarchical hexagonal indexing for geospatial data





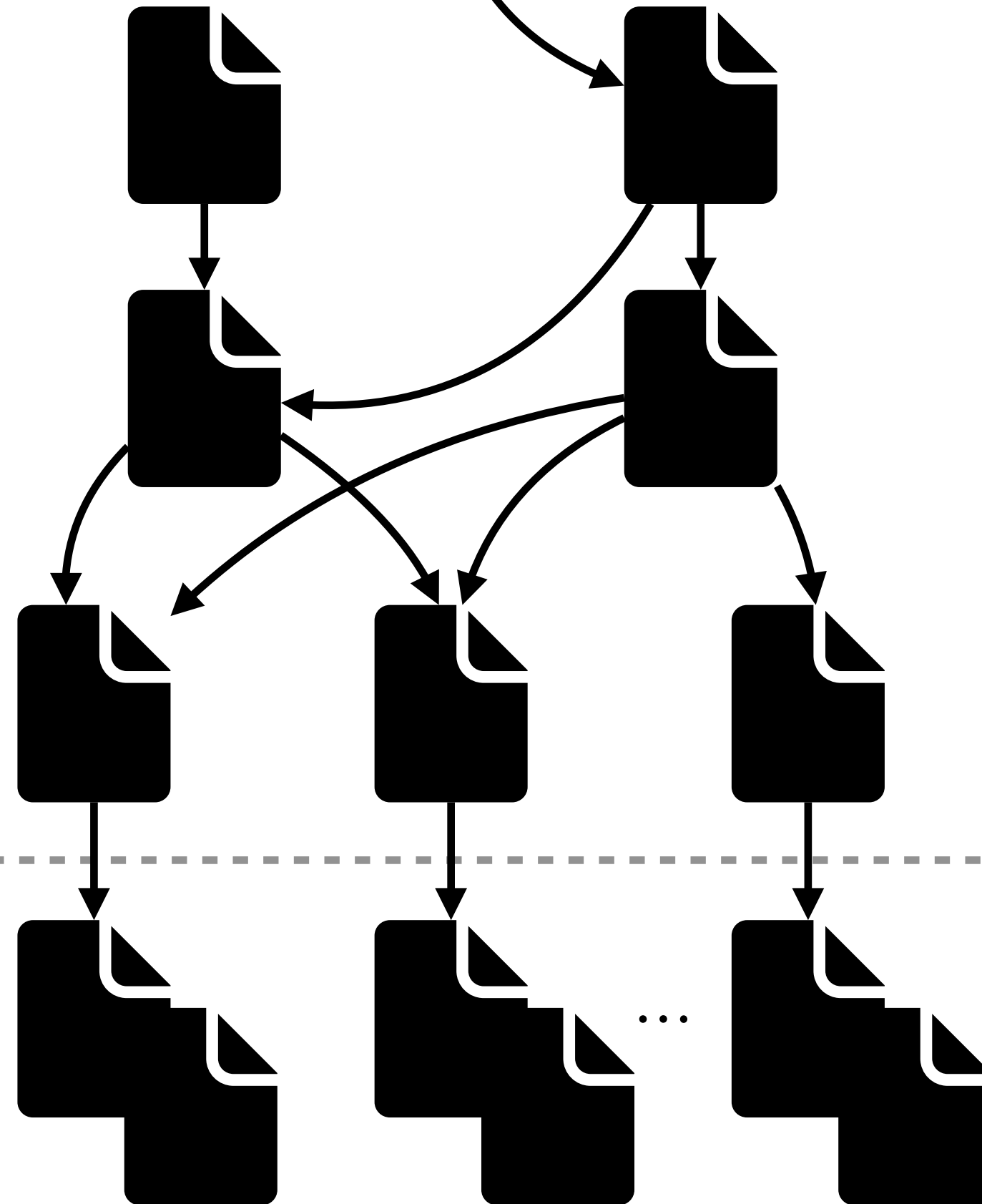


catalog layer
(database)



Transactional updates
Time travel queries
Schema evolution

metadata layer
(json + avro)



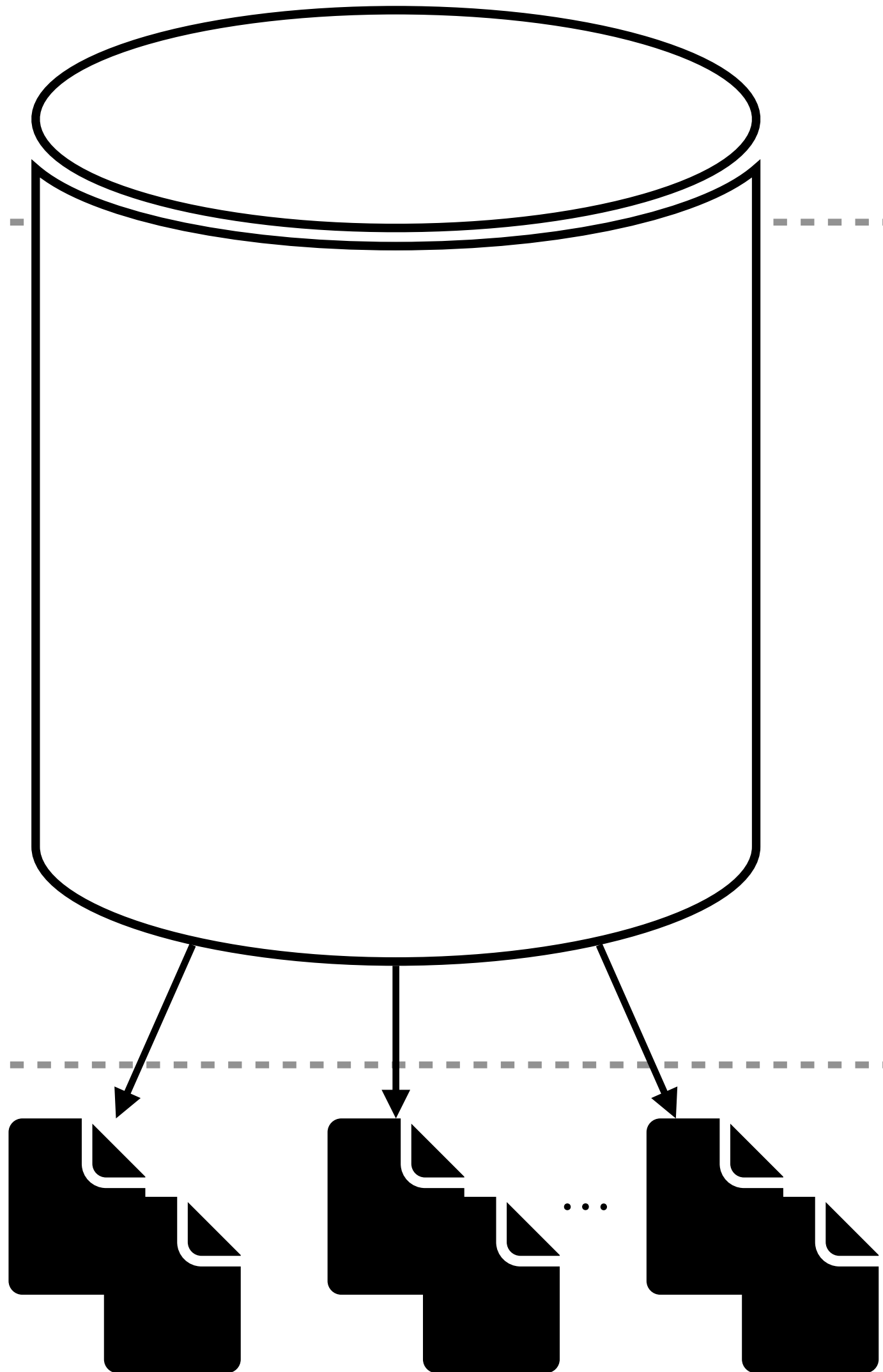
data layer
(parquet)



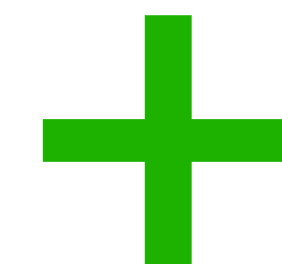
catalog layer
(database)

metadata layer
(database)

data layer
(parquet)



Transactional updates
Time travel queries
Schema evolution



Lightweight snapshots
Multi-table ACID
High performance
Data inlining

